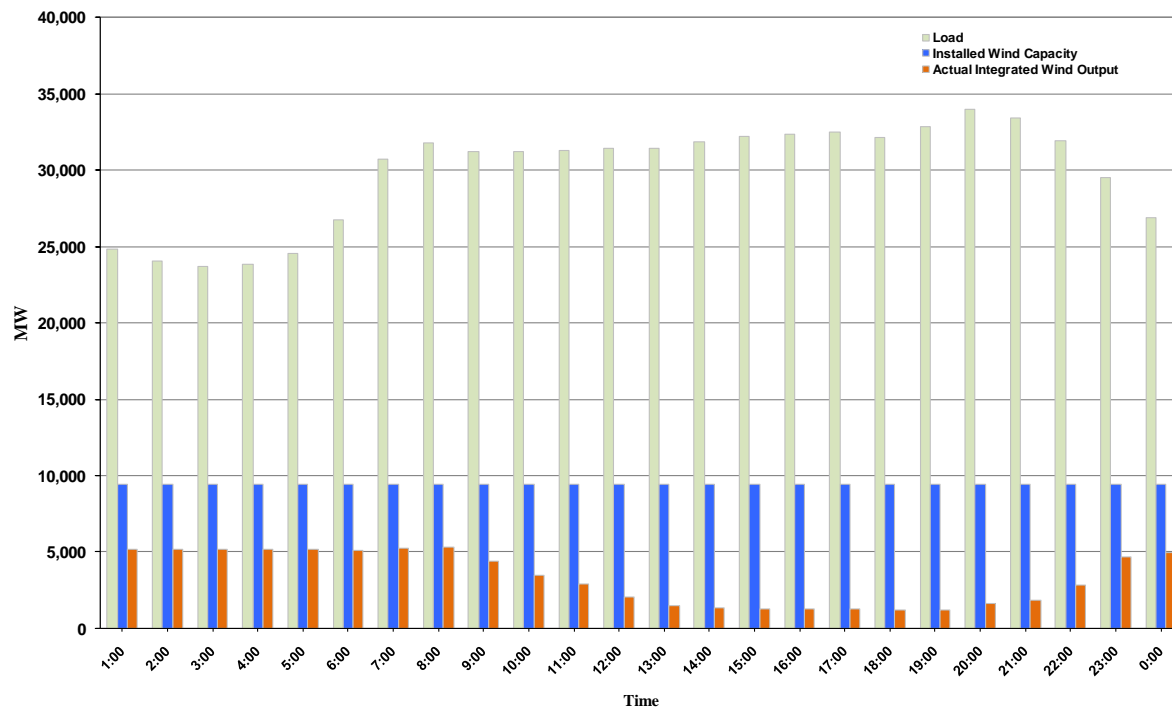




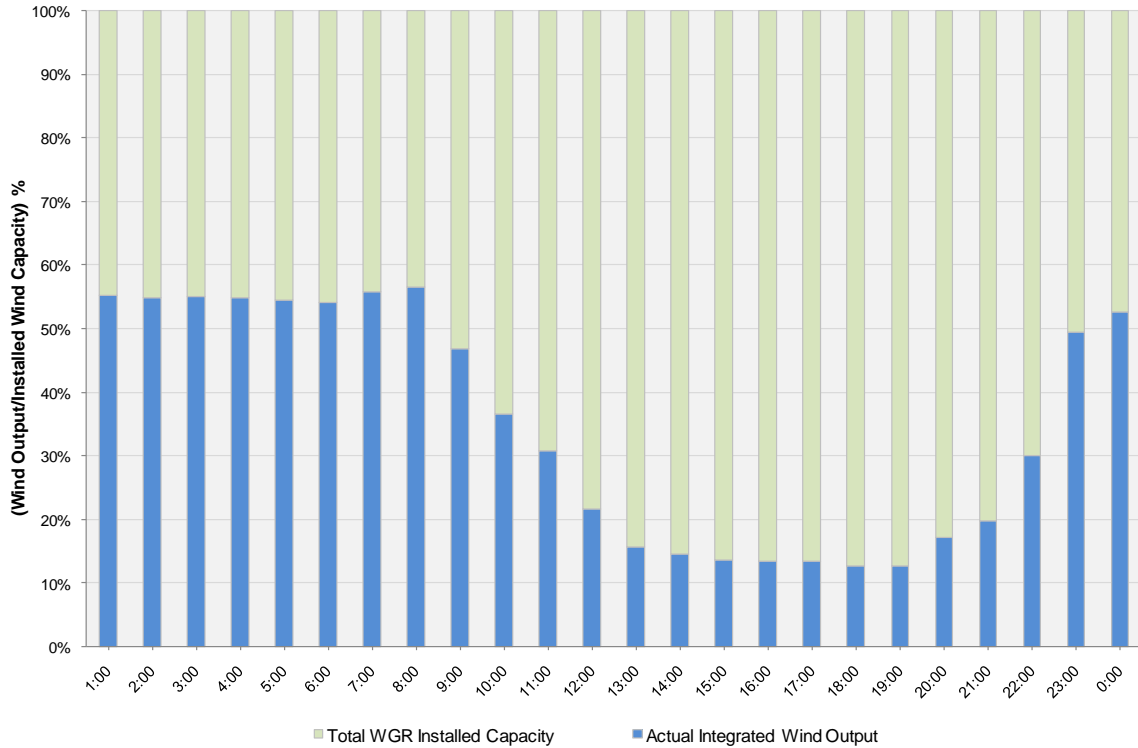
## ERCOT Grid Operations Wind Integration Report: 03/03/11

|                      |           |
|----------------------|-----------|
| Peak Load            | 33,966 MW |
| Load Peak Hour       | 20        |
| Wind Record 12/11/10 | 7,227 MW  |
| Max Wind Value       | 5,517 MW  |
| Wind Peak Hour       | 06:54:00  |
| Wind Integration %   | 17.28     |

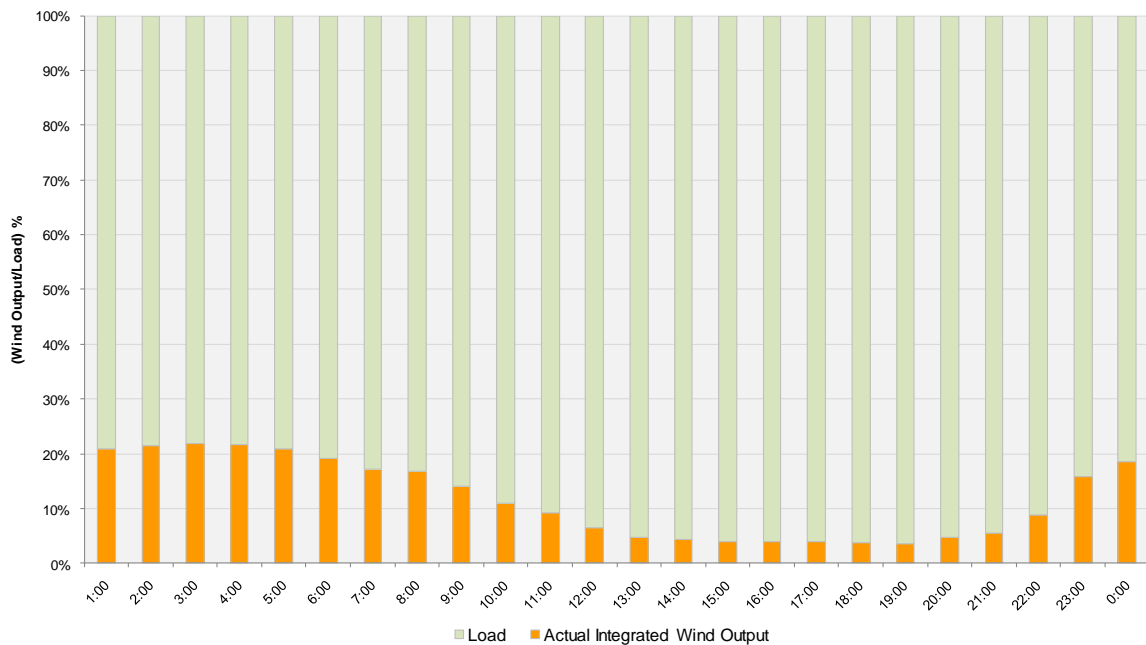
Hourly Average Actual Load vs. Actual Wind Output  
03-03-2011



**Actual Wind Output as a Percentage of the Total Installed Wind Capacity**  
**03-03-2011**



**Actual Wind Output as a Percentage of the ERCOT Load**  
**03-03-2011**



ERCOT Load vs. Actual Wind Output 2/24/2011 - 3/3/2011

